

The structure of DNA



<http://ghr.nlm.nih.gov/handbook/illustrations/dnastructure.jpg>

ATGCCGATCGTACGACACATATCGTCATCGTACTGACTGTCTAGTCTAAACACATCCATCGTACTGACTGCATCGATC
TACTGACTGCATCGTACTGACTGCACATATCGTCATCGTACTGACTGTCTAGTCTAAACACATCCCACATATCGTTTA
CATCGTACTGACTGTCTAGTCTAAACACATCCCACATATCGTCATCGTACTGACTGTCTAGTCTAAACACATCCCAGC
CATATCGTCATCGTACTGACTGTCTAGTCTAAACACATCCTATGCCGATCGTACGACACATATCGTCATCGTACTGCC
ACTGTCTAGTCTAAACACATCCATCGTACTGACTGCATCGTACTGACTGCATCGTACTGACTGCACATATCGTCATA
TCGTACTGACTGTCTAGTCTAAACACATCCCACATATCGTCATCGTACTGACTGTCTAGTCTAAACACATCCCACCTT
ATATCGTCATCGTACTGACTGTCTAGTCTAAACACATCCCACATATCGTCATCGTACTGACTGTCTAGTCTAAACA
GCCGATCGTACGACACATATCGTCATCGTACTGCCCTACGGGACTGTCTAGTCTAAACACATCCATCGTACTGACTGC
TGACTGCATCGTACTGACTGCACATATCGTCATAACATAGACTTCGTACTGACTGTCTAGTCTAAACACATCCCACATA
CGTACTGACTGTCTAGTCTAAACACATCCCACCTTACCCATGCATCGTACTGACTGTCTAGTCTAAACACATCCCACA
ATCGTACTGACTGTCTAGTCTAAACACATCCCAGCATCCATCCATATCGTCATCGTACTGACTGTCTAGTCTAAACAC
GCCGATCGTACGACACATATCGTCATCGTACTGCCCTACGGGACTGTCTAGTCTAAACACATCCATCGTACTGACTGC
TGACTGCATCGTACTGACTGCACATATCGTCATAACATAGACTTCGTACTGACTGTCTAGTCTAAACACATCCCACATA
CGTACTGACTGTCTAGTCTAAACACATCCCACCTTACCCATGATATCGTCATCGTACTGACTGTCTAGTCTAAACACA
TATCGTCATCGTACTGACTGTCTAGTCTAAACACATCCTATACATATCGTCATCGTACTGACTGTCTAGTCTAAACAC
GCCGATCGTACGACACATATCGTCATCGTACTGCCCTACGGGACTGTCTAGTCTAAACACATCCATCGTACTGACTGC
TGACTGCATCGTACTGACTGCACATATCGTCATAACATAGACTTCGTACTGACTGTCTAGTCTAAACACATCCCACATA
CGTACTGACTGTCTAGTCTAAACACATCCCACCTTACCCATGATATCGTCATCGTACTGACTGTCTAGTCTAAACACA
TATCGTCATCGTACTGACTGTCTAGTCTAAACACATCCTATAGCCGATCGTACGACACATATCGTCATCGTACTGCC
CTGTCTAGTCTAAACACATCCATCGTACTGACTGCATCGTACGCCGATCGTACGACACATATCGTCATCGTACTGCC
CTGTCTAGTCTAAACACATCCATCGTACTGACTGCATCGTACTGACTGCATCGTACTGACTGCACATATCGTCATA
CGTACTGACTGTCTAGTCTAAACACATCCCACATATCGTCATCGTACTGACTGTCTAGTCTAAACACATCCCACCTT
ATCGTACTGACTGTCTAGTCTAAACACATCCCACATATCGTCATCGTACTGACTGTCTAGTCTAAACACATCCCAGCA
ATATCGTCATCGTACTGACTGTCTAGTCTAAACACATCCTATGCCGATCGTACGACACATATCGTCATCGTACTGCC
CTGTCTAGTCTAAACACATCCATCGTACTGACTGCATCGTACGACTGCATCGTACTGACTGCACATATCGTCATA
GTACTGACTGTCTAGTCTAAACACATCCCACATATCGTCATCGTACTGACTGTCTAGTCTAAACACATCCCACCTT
ATCGTCATCGTACTGACTGTCTAGTCTAAACACATCCCACACTGTCTAGTCTAAACACATCCATCGTACTGACTGCAT
CGATCGTACGACACATATCGTCATCGTACTGCCCTACGGGACTGTCTAGTCTAAACACATCCATCGTACTGACTGCAT

DNA Fingerprinting (aka Genotyping)

The structure of DNA



| | |
|----|----|
| 5' | 3' |
| A | T |
| T | A |
| G | C |
| C | G |
| C | G |
| G | C |
| A | T |
| T | A |
| C | G |
| G | C |
| T | A |
| T | A |
| 3' | 5' |

Humans can differ from each other by Single Nucleotide Polymorphisms (SNPs)

| | |
|----|----|
| 5' | 3' |
| A | T |
| T | A |
| G | C |
| C | G |
| C | G |
| G | C |
| A | T |
| T | A |
| C | G |
| T | A |
| T | A |
| T | A |
| 3' | 5' |

Human #1

5' -ATGCCGATCGTT-3'
3' -TACGGCTAGCAA-5'

Humans can differ from each other by Single Nucleotide Polymorphisms (SNPs)

5' 3'
A T
T A
G C
C G
C G
G C
A T
T A
C G
T A
T A
T A
3' 5'

Human #1

5' -ATGCC**G**ATCGTT-3'
3' -TACGG**C**TAGCAA-5'

Human #2

5' -ATGCC**A**ATCGTT-3'
3' -TACGG**T**TAGCAA-5'

What is DNA Fingerprinting (Genotyping) used for?

What is DNA Fingerprinting (Genotyping) used for?

-- Paternity Testing

-- Forensics

-- Discovering the gene that, when mutated, leads to a disease

Humans can differ from each other by Single Nucleotide Polymorphisms (SNPs)

5' 3'
A T
T A
G C
C G
C G
G C
A T
T A
C G
T A
T A
T A
3' 5'

Human #1

5' -ATGCC**G**ATCGTT-3'
3' -TACGG**C**TAGCAA-5'

Human #2

5' -ATGCC**A**ATCGTT-3'
3' -TACGG**T**TAGCAA-5'

Humans can differ from each other by Simple Sequence Repeats (SSRs)

Human #1

5' -ATGCC**GTGTGT**GATCGTT-3'
3' -TACGG**CACACA**CTAGCAA-5'

Human #2

5' -ATGCC**GTGTGTGTGT**GATCGTT-3'
3' -TACGG**CACACACACA**CTAGCAA-5'

Humans can differ from each other by Simple Sequence Repeats (SSRs)

Human #1

5' -ATGCC**GTGTGT**GATCGTT-3'
3' -TACGG**CACACA**CTAGCAA-5'



one DNA that is 18 nucleotides long

Human #2

5' -ATGCC**GTGTGTGTGTGT**GATCGTT-3'
3' -TACGG**CACACACACA**CTAGCAA-5'



one DNA that is 22 nucleotides long

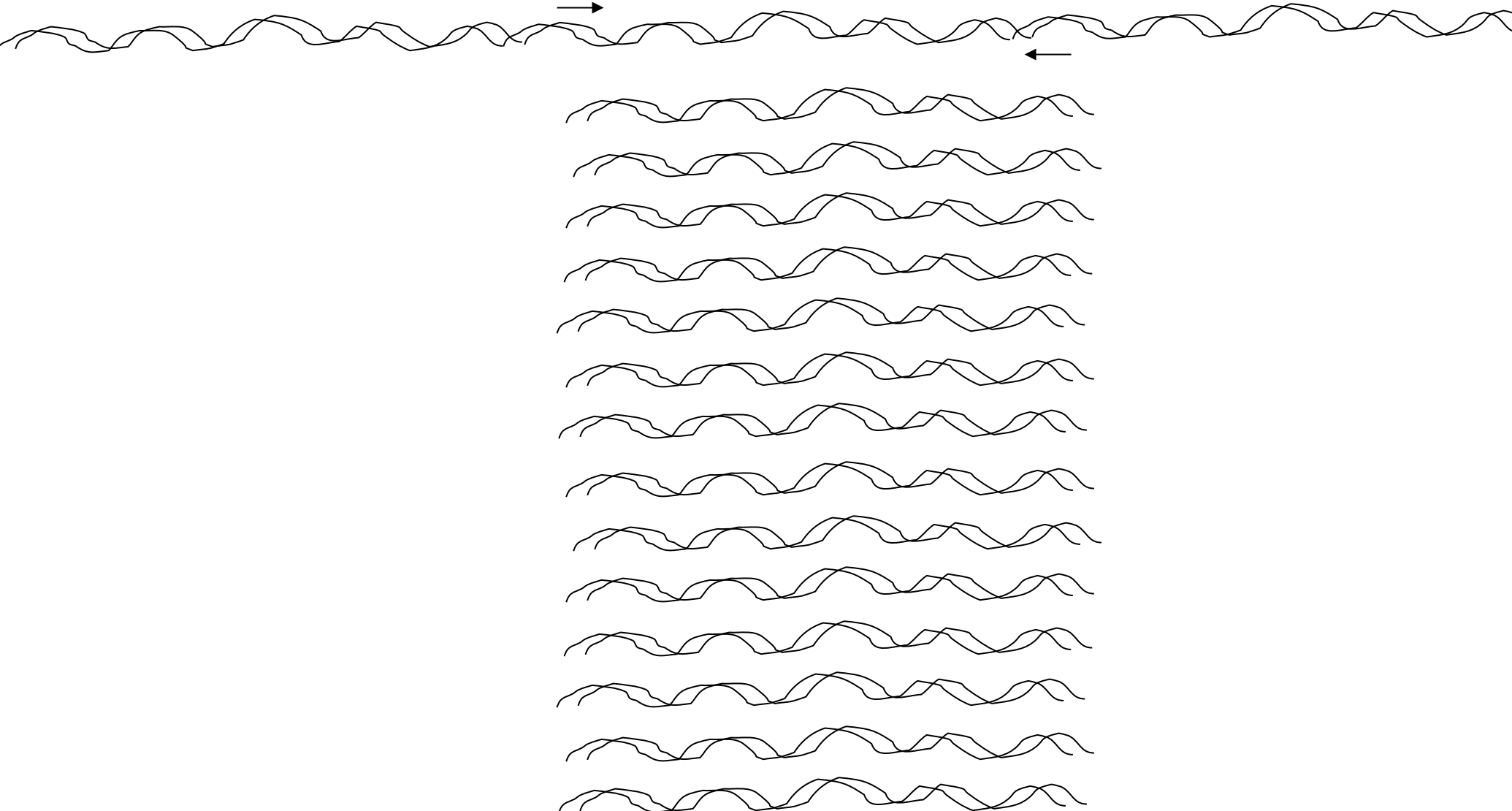
Gel Electrophoresis

- A technique that allows pieces of DNA to be separated by size
- A gel is a matrix that molecules can move through
- DNA is negatively charged

PCR - a way to copy one area of the DNA



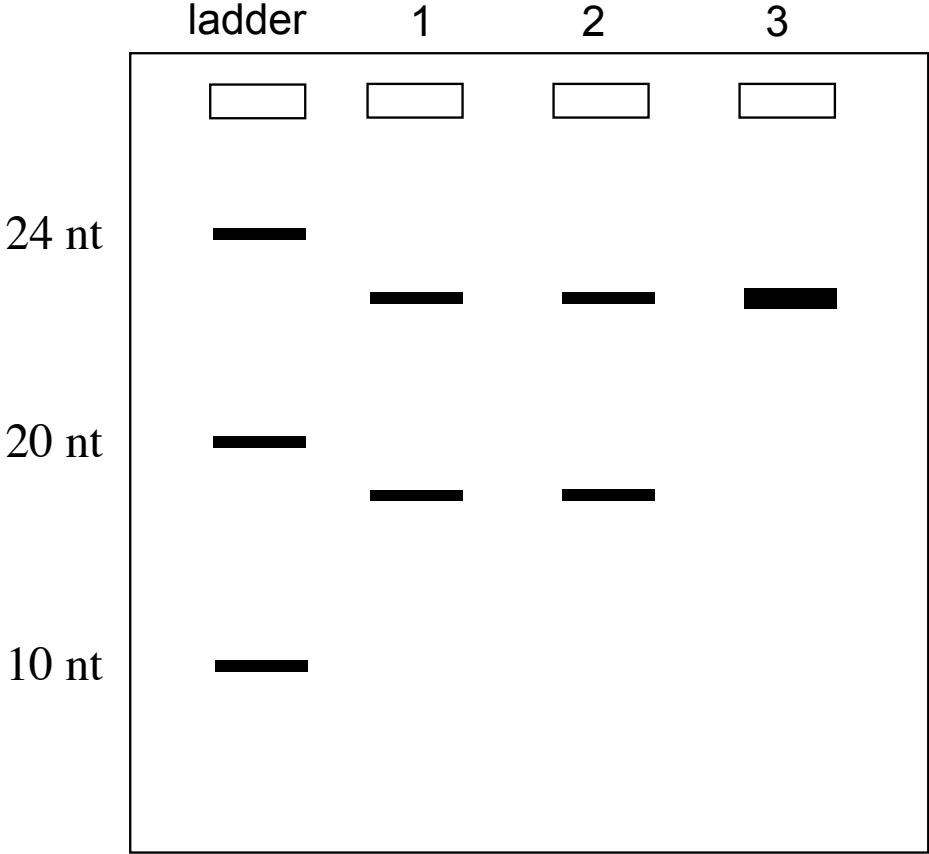
PCR - a way to copy one area of the DNA



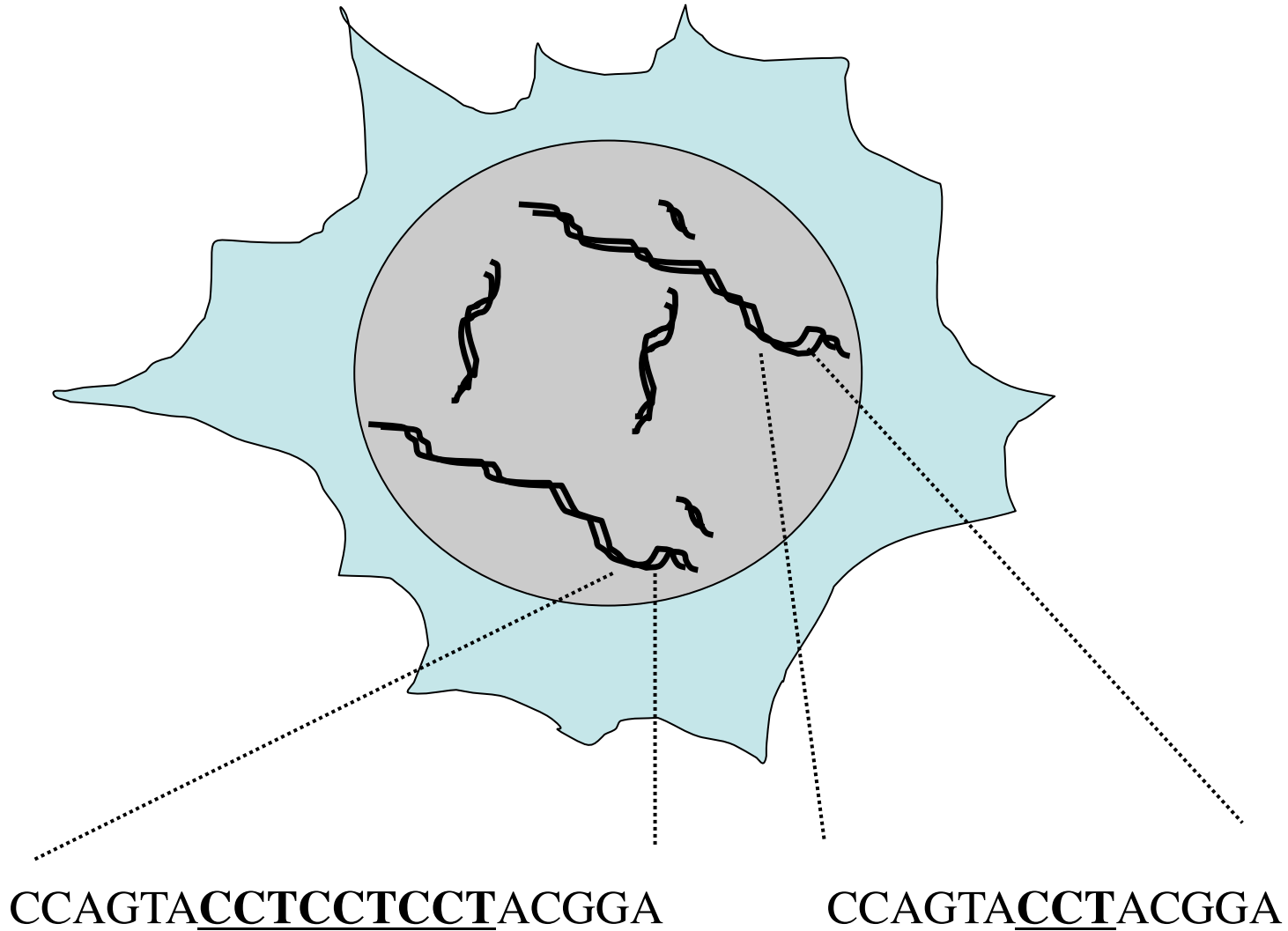
Using Gel Electrophoresis for Fingerprinting

- 1) Isolate the DNA from a person
- 2) Make copies of just the one region of DNA you want to study
- 3) Run the DNA through a gel

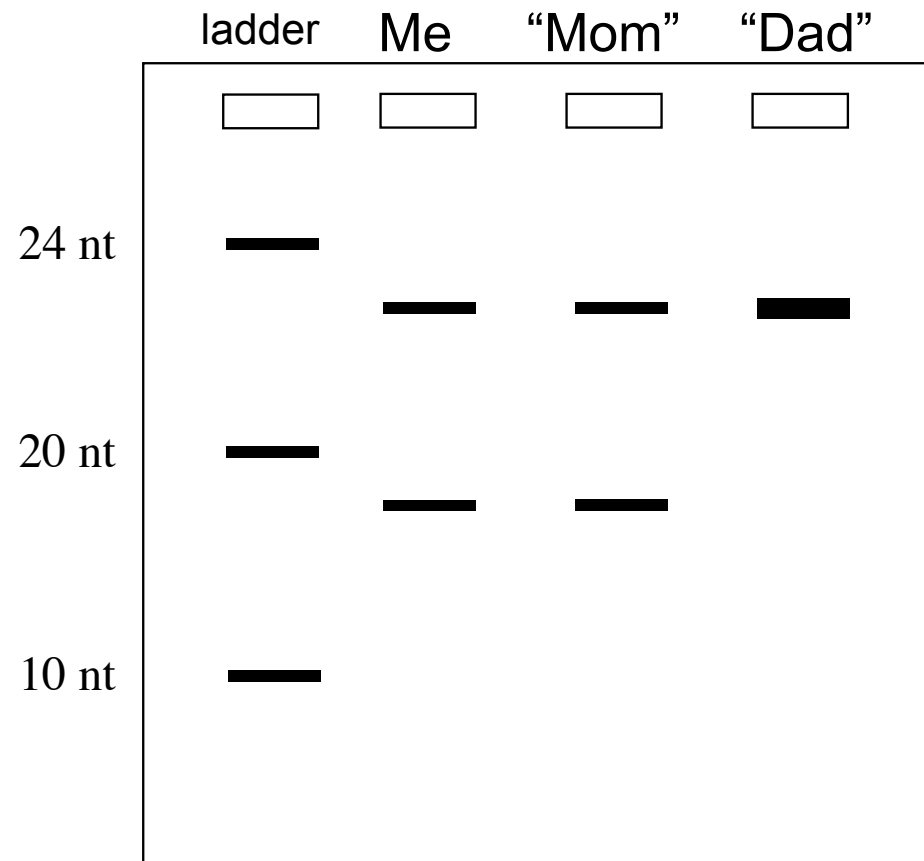
Gel Electrophoresis



Half my DNA is from mom and half is from dad



Can these people be my parents?



Are these my parents?

A mix up between 3 babies and 3 sets of parents

-- 3 babies in a maternity ward: A, B, C

-- 3 couples: Mom #1 & Dad #1
 Mom #2 & Dad #2
 Mom #3 & Dad #3

A specific region of chromosome #15

5' ...GCTAAGTATTGCTCAAGA... (TTAGGAT) *n*...GATAAATAACTGGCTAGTA...-3'
3' ...CGATTCATAACGAGTTCT... (AATCCTA) *n*...CTATTTATTGACCGATCAT...-5'

Questions to Answer

-- Given the data so far, which of the three babies can you already conclusively connect to a set of parents?

-- How did you conclude this?

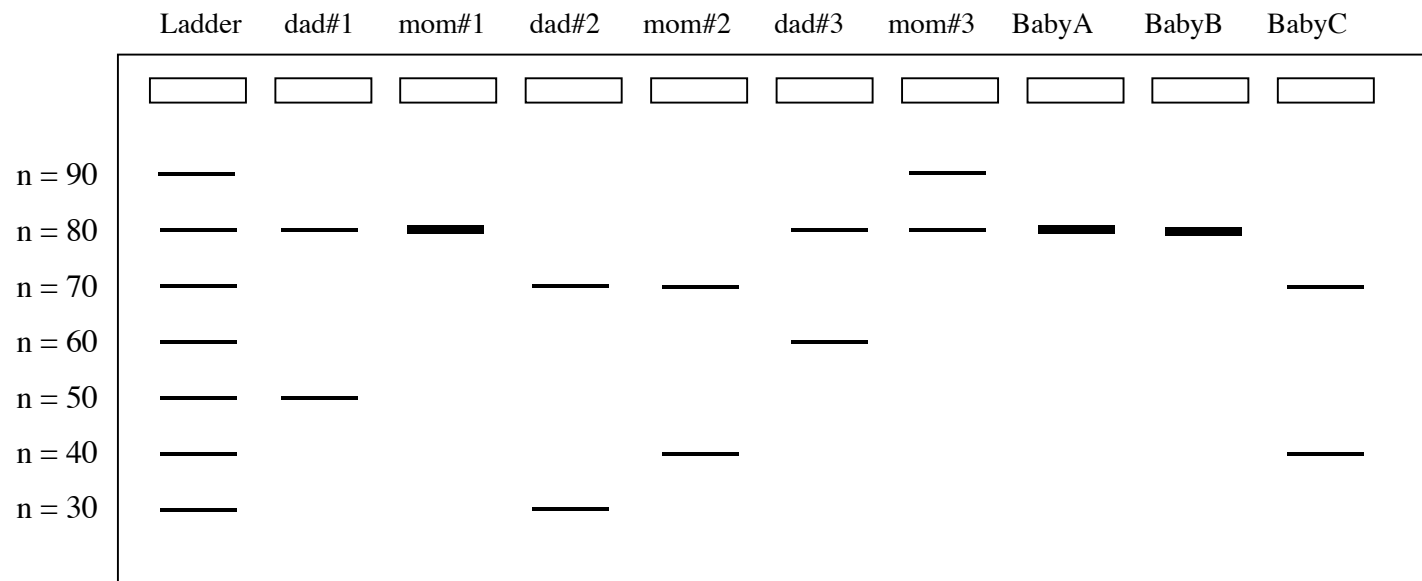
-- Why can you not determine the parents of all of the babies at this point?

-- How do you think you would go about conclusively determining the parents of the remaining babies using DNA fingerprinting analysis?

A specific region of chromosome #4

5' ...ACTGTAAACGCTAGCTGGTTCACTG... (CAG) *n*...CCTATAGCTAGCTTTACGGA...-3'
3' ...TGACATTTGCGATCGACCAAGTGAC... (GTC) *n*...GGATATCGATCGAAATGCCT...-5'

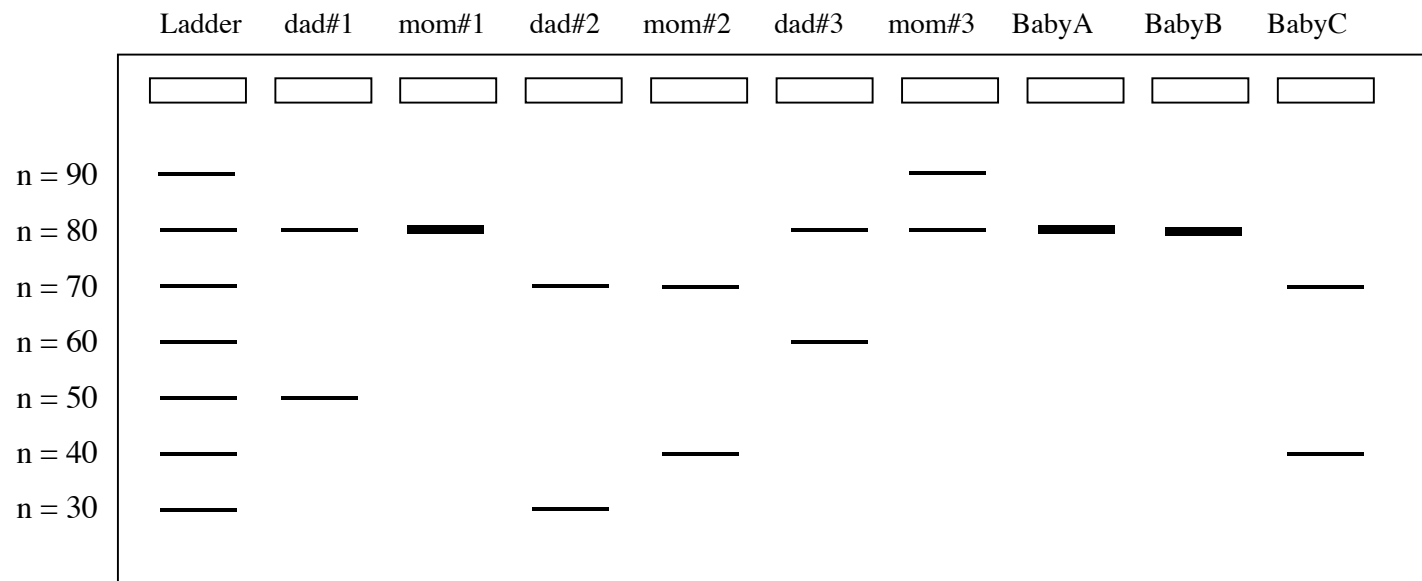
Examining a region of chromosome #4



Questions to Answer

- Given all the data in this problem, match the three sets of parents to the three babies.
- Explain how this site on chromosome #4 allowed you to match parents #1 and parents #2 to the correct baby (B or C).

Examining a region of chromosome #4



Whose DNA was found at the crime scene?